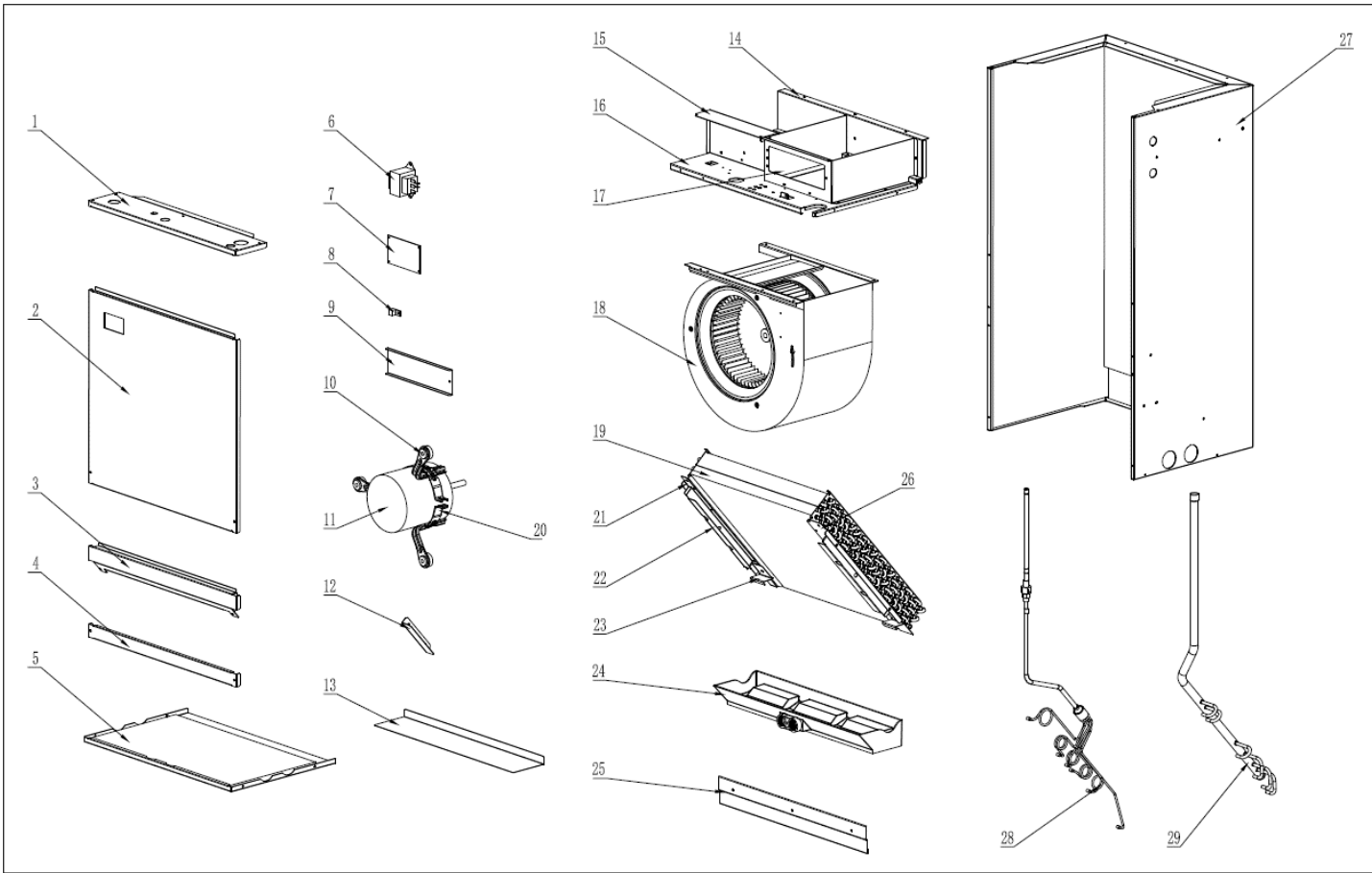
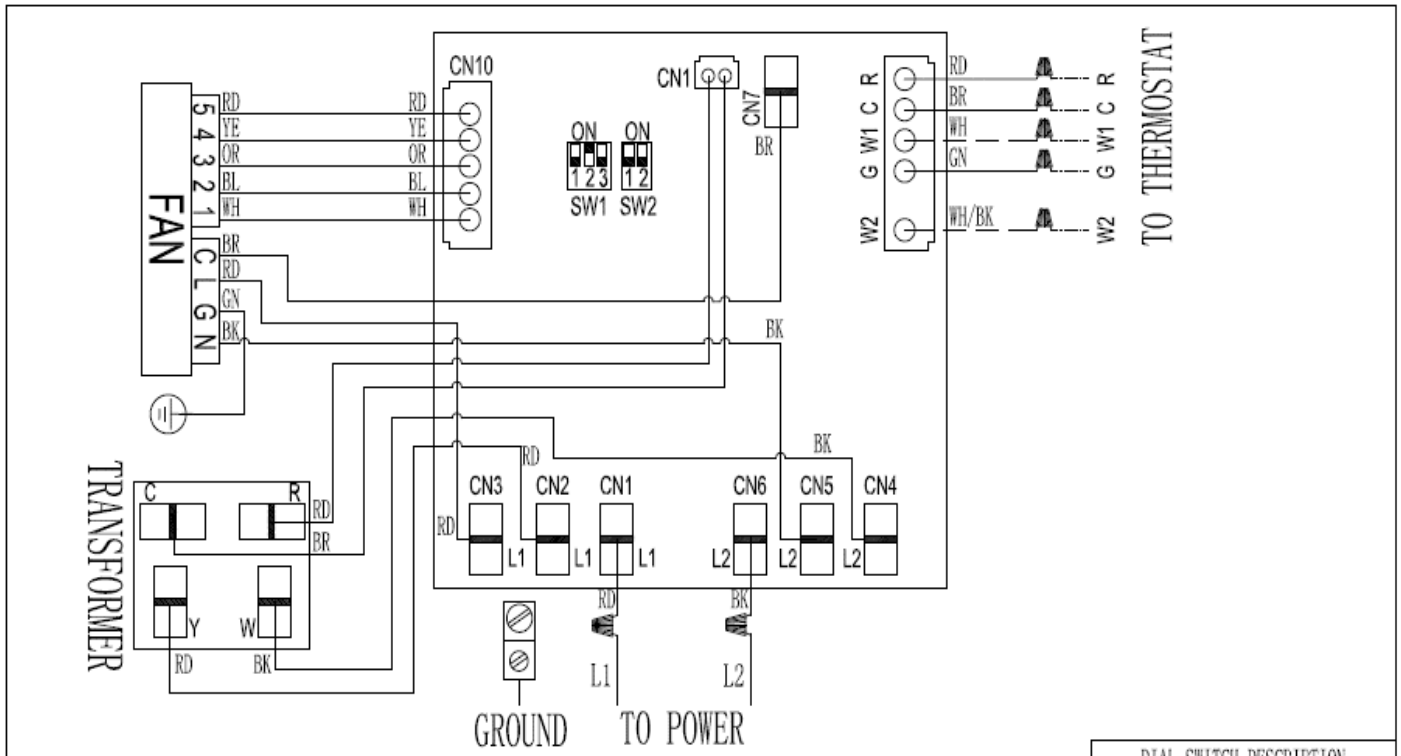


Exploded View - FAHC18HA15





LINEAR ANNOTATION	NOTES	DIAL SWITCH DESCRIPTION	
<p>————— FACTORY DEFAULT</p> <p>- - - - - FIELD INSTALLED</p> <p>----- FACTORY OPTION</p> <p>Please refer to the actual wiring diagram.</p>	<p>1. Grounded and all wiring to conform to I.E.C.</p> <p>2. Replacement wire must be the same gauge and insulation type as original wire.</p> <p>3. The units should connect the stated cross-section earth wire and keep it grounding unflinching.</p> <p>4. Electric Heater is optional.</p>	SW1-1	LOW
		SW1-2	MEDIUM LOW
		SW1-3	MEDIUM
		SW2-1	MEDIUM HIGH
		SW2-2	HIGH

No.	Part Name	Quantity	Price(\$)	BOM Code	Remark
1	Electric control cover cotton sticking assembly	1		91044875	3.38
2	Upper side panel cotton sticking assembly	1		91044876	9.74
3	Sealing plate cotton sticking assembly	1		91044877	2.42
4	Lower reinforcement plate	1		91044878	1.32
5	Lower side panel cotton sticking assembly	1		91044879	7.75
6	Transformer	1		91041237	14.66
7	PCB	1		91034032	5.29
8	Brass binding post	1		91043061	1.16
9	Electric heater sealing plate	1		91043691	1.73
10	Motor fixing beam assembly	3		91044868	1.51
11	Fan motor	1		91047069	219.83
12	Limit plate	1		91044870	0.53
13	Drain pan support plate	1		91044869	1.62
14	Rear side panel of air duct	1		91044865	2.50
15	Electric control mounting plate	1		91044880	1.43
16	Volute fixing plate cotton sticking assembly	1		91044866	7.44
17	Air duct panel	1		91044867	3.11
18	Wind wheel volute	1		91038109	38.47
19	Evaporator	1		91044429	134.14
20	Motor clamp	1		91043692	0.80
21	Evaporator left connecting plate	1		91044871	0.82
22	Filter rail	2		91044873	0.61
23	Drain pan fixing block	2		91044874	0.24
24	Plastic drain pan cotton sticking assembly	1		91044421	8.16
25	Rear mounting plate	2		91044881	1.90
26	Evaporator right connecting plate	1		91044872	0.96
27	Base pan cotton sticking assembly	1		91044864	52.30
28	Evaporator shunt pipe assembly	1		91048222	20.62
29	Evaporator gas collector pipe assembly	1		91044758	15.41