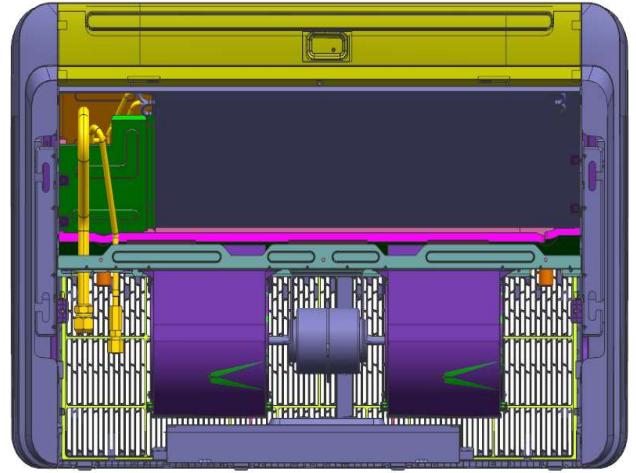
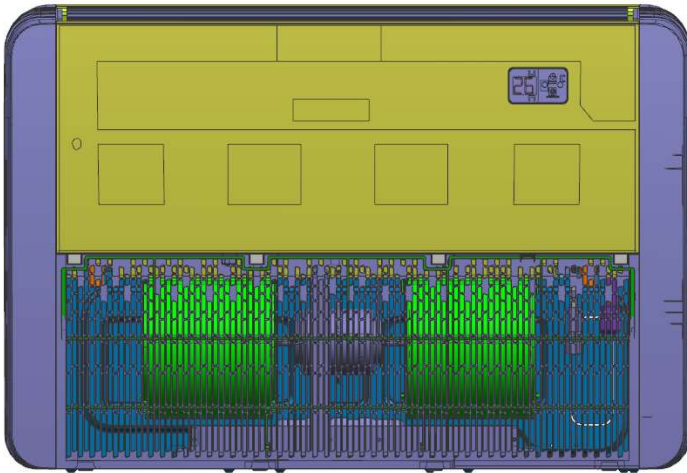


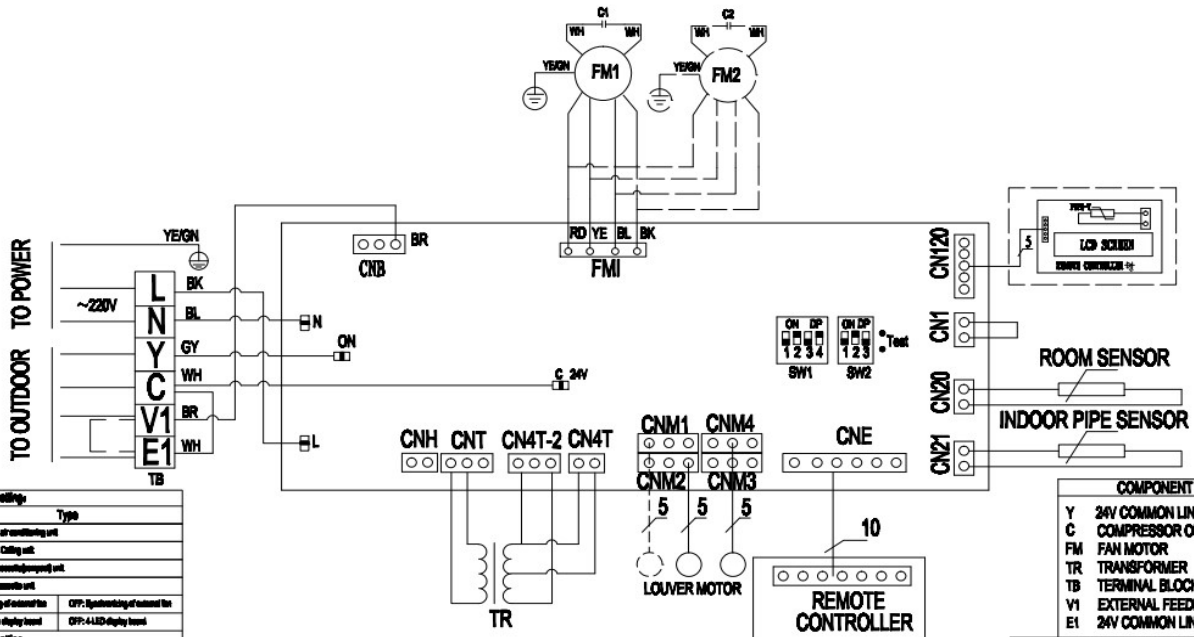


Exploded View FCAC-24



802019900057 / V.0

CIRCUIT DIAGRAM



SW1 DIP switch settings:	Type
OFF OFF	Default of manufacturing unit
OFF ON	Phase B Calling unit
ON OFF	4-way remote control (outdoor unit)
ON ON	4-way remote control
ON OFF	Disabling of outdoor fan
OFF OFF	SPY: Speeding of outdoor fan
ON OFF	ON: Digital tube display board
OFF OFF	OFF: 4-LCD display board

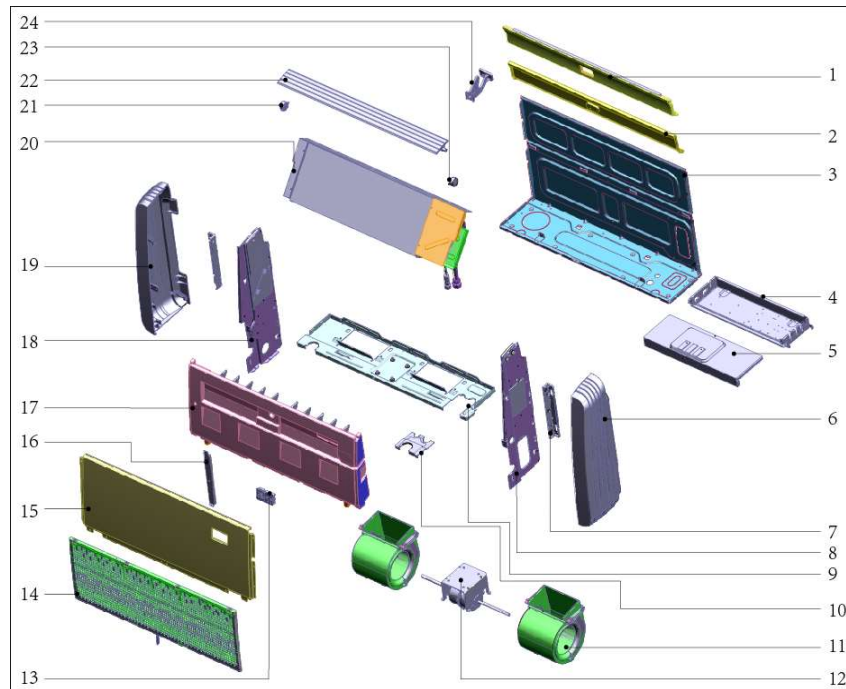
SW2 DIP switch settings:	SPY: Speeding type	OFF: Default type
ON	With Non-volatile Memory	OFF: Without Non-volatile Memory
ON	Speed from 100% to 120%	OFF: Speed from 100% to 110%
ON	Speed from 100% to 130%	OFF: Speed from 100% to 120%

The voltage between L phase and N phase should be 220V
 - - - - - Expressed the actual installation may choose the part

COMPONENT CODE		
Y	24V COMMON LINE	
C	COMPRESSOR OUTPUT 24V	
FM	FAN MOTOR	
TR	TRANSFORMER	
TB	TERMINAL BLOCK	
V1	EXTERNAL FEEDBACK SIGNAL	
E1	24V COMMON LINE	

WIRE COLOR CODE		
RD RED	OR ORANGE	WH WHITE
BK BLACK	GY GREY	YE YELLOW
BL BLUE	GN GREEN	BR BROWN

Exploded View FCAC-24



No.	Part No.	Part Name	Qty	Remark
1	802223790002	Chassis assembly	1	
2	801223790056	Rear cover	1	
3	801223790053	Chassis assembly	1	
4	803323790031	Indoor PCB assembly	1	
4.1	801223790040	E-part box	1	
4.2	803300300865	Indoor PCB	1	
4.3	802401100039	Fan capacitor	1	
4.4	802300200068	Transformer	1	
4.5	802300400086	Temperature sensors (indoor)	1	
4.6	802425590010	Terminal	1	
5	801225590014	E-part box cover	1	
6	801125590056	Left cover	1	
7	801225590159	Hoisting plate	2	
8	801225590155	Self separating board	1	
9	801223790057	Weld assembly for intermediate transverse girder	1	
10	801225590168	Piping plate	1	
11.1	801125590036	Centrifugal wind wheel	2	
11.2	801125590045	Upper volute	2	
11.3	801125590046	Lower volute	2	
12.1	801225590010	Motor bracket	1	
12.2	801225590009	Motor separating board	1	
12.3	802400400304	Indoor fan motor	1	



Exploded View FCAC-24

No.	Part No.	Part Name	Qty	Remark
13	801123790005	Display panel assembly	1	
13.1	803324390050	Display lamp panel	1	
13.2	802025590129	Display film	1	
13.3	801125590063	Display panel mounting box	1	
14	801123790009	Air inlet grille	1	
15	801223790051	Top Cover assembly	1	
16	801223790052	Supporting board	1	
17.1	802223790001	Water tray component	1	
17.2	801125590049	Driving lever for louver	1	
17.3	801123790006	Louver holder	1	
17.4	801125590052	Guard vane	9	
18	801225590157	Right separating board	1	
19	801125590057	Right cover	1	
20	801523790024	Evaporator component	1	
20.1	801523790026	Evaporator assembly	1	
21	802425400003	Step motor	1	
22	801123790005	Horizontal louver assembly	1	
23	802425400001	Step motor	1	
24	801125590066	Air guide bracket	1	