

1

2

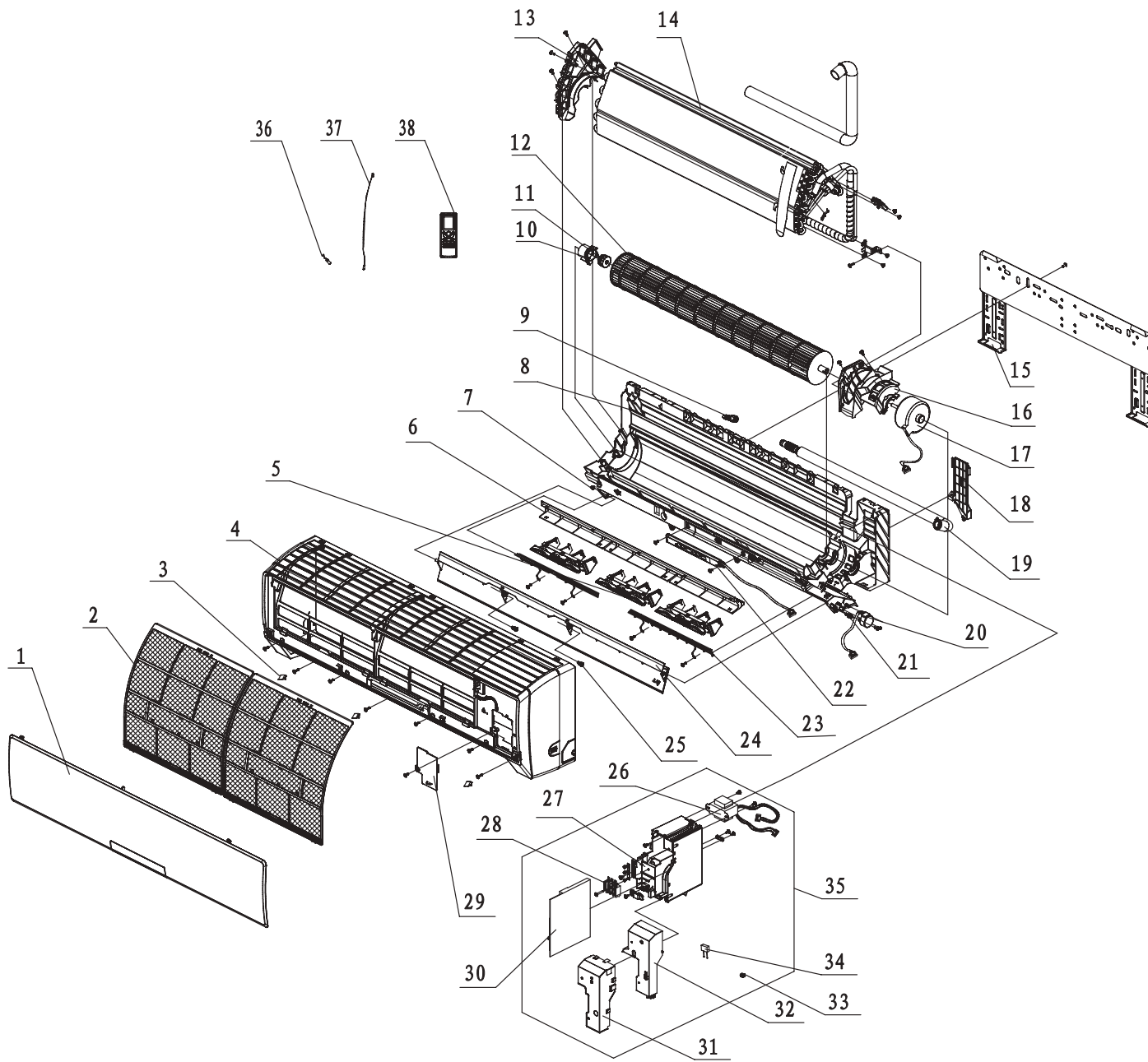
3

4

A

A

B



- 38 Remote Controller
- 37 Tube Sensor
- 36 Ambient Temperature Sensor
- 35 Electric Box Assy
- 34 Capacitor CBB61
- 33 Jumper
- 32 Electric Box Cover 1
- 31 Shield cover of Electric Box
- 30 Main Board
- 29 Electric Box Cover 2
- 28 Terminal Board
- 27 Electric Box
- 26 Transformer
- 25 Axile Bush
- 24 Guide Louver
- 23 Mesh enclosure (air outlet)
- 22 Display Board
- 21 Crank
- 20 Step Motor
- 19 Drainage hose
- 18 Pipe Clamp
- 17 Fan Motor
- 16 Motor Press Plate
- 15 Wall Mounting Frame
- 14 Evaporator Assy
- 13 Evaporator Support
- 12 Cross Flow Fan
- 11 O-Gasket sub-assy of Bearing
- 10 Ring of Bearing
- 9 Rubber Plug (Water Tray)
- 8 Rear Case Assy
- 7 Left Axile Bush
- 6 Helicoid tongue
- 5 Air Louver
- 4 Front Case Assy
- 3 Screw Cover
- 2 Filter Sub-Assy
- 1 Front Panel Assy



1

2

3

4