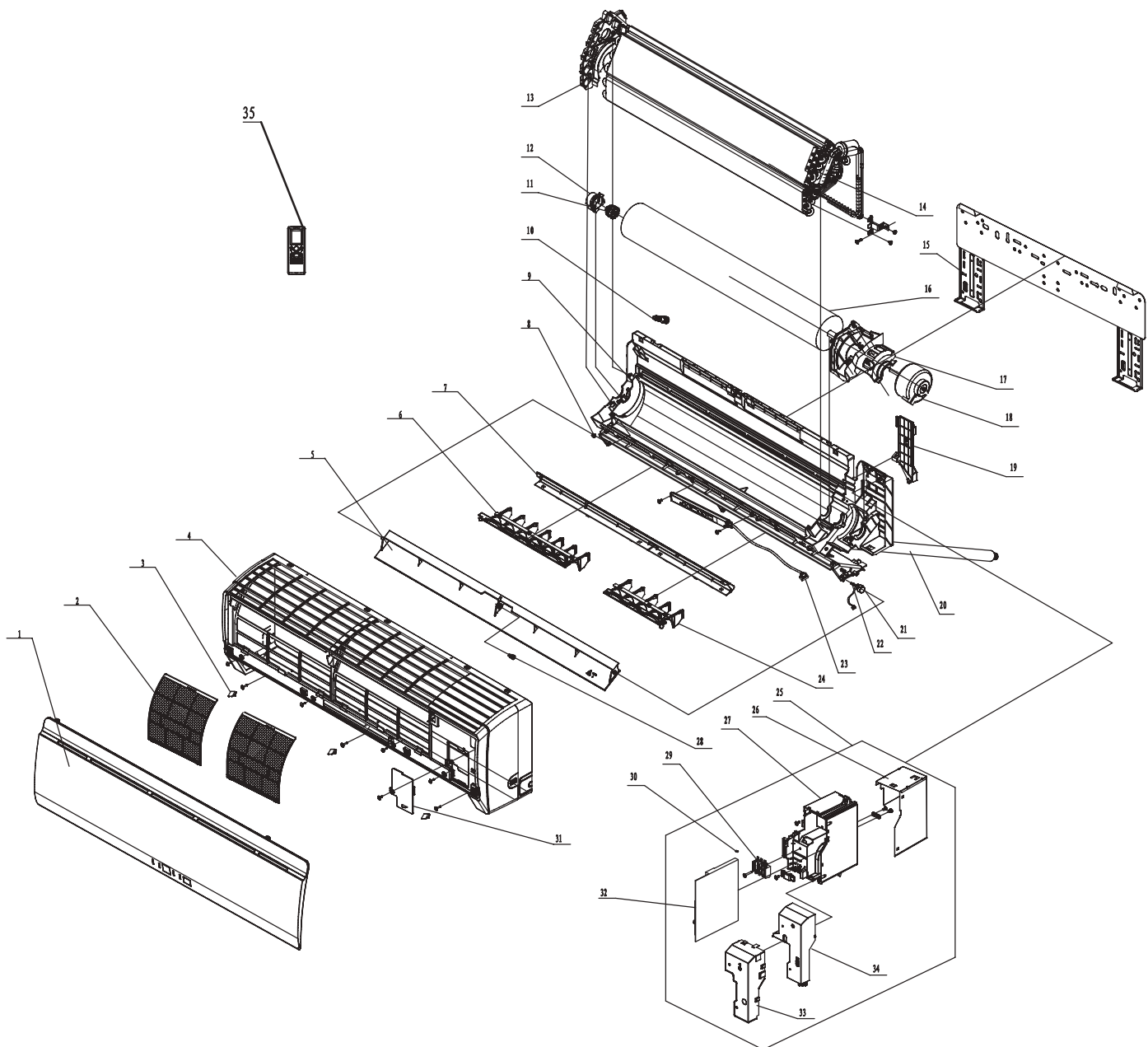


A

A

B



- 35 Remote Controller
- 34 Electric Box Cover1
- 33 Shield cover of Electric Box
- 32 Main Board
- 31 Electric Box Cover2
- 30 Jumper
- 29 Terminal Board
- 28 Axile Bush
- 27 Electric Box
- 26 Lower Shield of Electric Box
- 25 Electric Box Assy
- 24 Air Louver 2
- 23 Display Board
- 22 Crank
- 21 SteppingMotor
- 20 Drainage hose
- 19 Connecting pipe clamp
- 18 Fan Motor
- 17 Motor Press Plate
- 16 Cross Flow Fan
- 15 Wall Mounting Frame
- 14 Evaporator Assy
- 13 Evaporator Support
- 12 O-Gasket sub-assy of Bearing
- 11 O-Gasket of Cross Fan Bearing
- 10 Rubber Plug (Water Tray)
- 9 Rear Case assy
- 8 Left Axile Bush
- 7 Helicoid tongue
- 6 Air Louver 1
- 5 Guide Louver
- 4 Front Case Sub-Assy
- 3 Screw Cover
- 2 Filter Sub-Assy
- 1 Front Panel Assy

