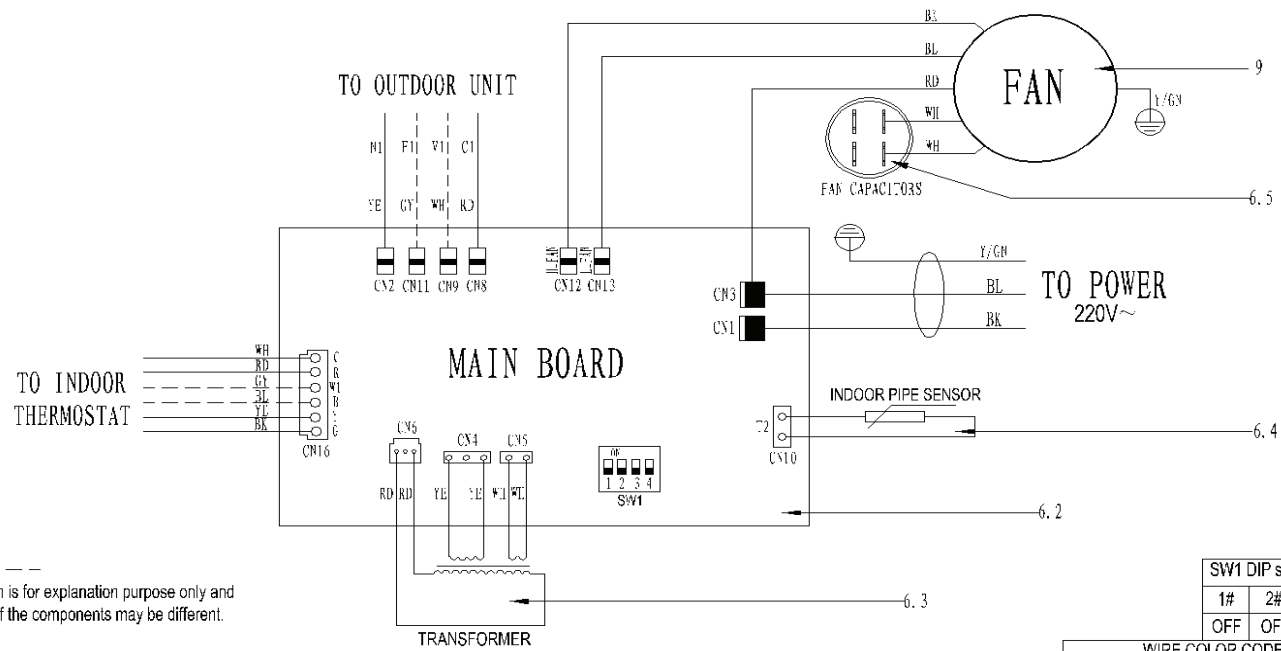


- 1 Chassis assembly
- 2 Right Volute Wind Wheel
- 3 Fan Motor Fixing plate
- 4 Wind Wheel Fixed Block
- 5 Electronic Control Fixing Plate Welding Assembly
- 6 Electronic Control Components
- 6.1 Electronic Control Mounting Plate
- 6.2 Main Board
- 6.3 Transformer
- 6.4 Temperature Sensor
- 6.5 Fan Motor Capacitor
- 7 Upper side plate assembly
- 8 Middle Cross Beam Assembly
- 9 Indoor Motor
- 10 Evaporator Fixing Plate #2
- 11 Evaporator Water Baffle #2
- 12 Air header Assembly
- 13 Evaporator Water Baffle #1
- 14 Diverter Assembly
- 15 Lower side plate assembly
- 16 Water pan fixed block
- 17 Pipe Cover plate assembly
- 18 Supporter
- 19 Filter Cover plate
- 20 Water pan supporter assembly
- 21 Filter
- 22 Water pan# 1
- 23 Evaporator
- 24 Water pan# 2
- 25 Evaporator Baffle
- 26 Evaporator Water Baffle #1
- 27 Evaporator Fixing Plate #1
- 28 Evaporator Junction Plate
- 29 Water pan brace

802034590072 V.2

# CIRCUIT DIAGRAM



NOTE 1: - - - - -  
 The wiring diagram is for explanation purpose only and the actual shape of the components may be different.  
 NOTE 2:  
 V1 and B wire only be used with HEADTING&COOLING SYSTEMS!

SW1 DIP switch setting:			
1#	2#	3#	4#
OFF	OFF	OFF	OFF

WIRE COLOR CODE		
RD RED	OR ORANGE	WH WHITE
BK BLACK	GY GREY	YE YELLOW
BL BLUE	GN GREEN	BR BROWN